



2009/10 Student & Teacher Activity Guide

TABLE OF CONTENTS

| | PAGE |
|--|-------------|
| PAC EDUCATIONAL EVENTS | 2 |
| Kentucky Repertory Theatre Events at the PAC | 3 |
| PAC Pages: <i>To Kill A Mockingbird</i> | 4 |
| National Science Education Standards Correlations with Mad Science's <i>CSI:Live</i> | 5 |
| Missoula Children's Theatre Workshop Opportunities | 6 |
| PAC To Go: Monday with the Maestro | 7 |
| PAC To Go: Kentucky Repertory Theatre's <i>Jack & the Wonder Beans</i> | 8 |
| PAC Play Dough | 9 |

2009/10 Student & Teacher Activity Guide

Do these events correlate to what I teach?

All PAC Educational Events are selected based upon The Kentucky Core Content and the Kentucky Program of Studies which have been aligned and encompass the Kentucky Academic Expectations. The PAC has focused our programming around these goals to ensure that the National Standards, Kentucky Core Content for Assessment, and the Kentucky Program of Studies are utilized as standards for PAC Educational Events. In addition, Study Guide Materials will be available on line at www.thepac.net in September 2009 for most PAC Events.

How do I make a reservation and how much do tickets cost?

Group Reservations are required for all PAC events and must be made online at www.thepac.net. Tickets for groups of 12 or more for PAC School Day Events are \$4 for Hardin County Schools' students, \$6 for non-Hardin County Schools groups. Regular admission costs apply to Student Groups attending Public Performances.

Can parents come too?

1 adult chaperone is required for every 12 students. 1 adult chaperone attends free of charge per every 12 students. All other parents must pay for admission, same as students.

I would love to come but aren't field trips too expensive these days?

Some PAC Events can be delivered to your school through PAC To Go; ARTS for All funding is available to all Hardin County Schools to assist with admission and transportation costs; and PAC Play Dough can be utilized to subsidize admission costs. Please refer to the individual pages for these funding programs found in this document.

| 2009/10 PAC EDUCATIONAL EVENTS | | Age Appropriate |
|---|--|----------------------------------|
|  | <p>PAC ProAm presents <i>Into The Woods</i> 9/17-19/09 at 7PM; 9/19/09 at 3PM (120 minutes)</p> <p>What happens after "Happily Ever After?" Amateur and Professional performers reveal the truths and lies behind our favorite storybook characters. Auditions: July 13, 2009. Call For Details.</p> | Middle School |
|  | <p>PAC presents <i>Ralph's World</i> 9/25/09 9:30AM, Noon & 6PM (45 minutes)</p> <p>Experience the zany and delightful music of Ralph's World as featured on Playhouse Disney! Kids and parents alike will enjoy singing along to the catchy original songs of Ralph Covert.</p> | Kindergarten |
|  | <p>PAC presents Montana Repertory Theatre's <i>To Kill A Mockingbird</i> 11/6/09 at 7PM (120 minutes)</p> <p>In celebration of the 50th Anniversary of the Pulitzer Prize-winning novel's publication, Montana Rep's touring production compels and delights audiences. Acting Workshop Available. Call For Details.</p> | High School |
|  | <p>PAC presents Mad Science's <i>CSI: Live</i> 11/20/09 at Noon & 7PM (60 minutes)</p> <p>The world's number one television franchise hits the stage in this exciting, interactive journey through the fascinating world of crime scene investigations.</p> | Middle School |
|  | <p>PAC presents <i>Clara's Tea Party</i> 12/19/09 at Noon (60 minutes)</p> <p>Young ladies and gentlemen and their chaperones are cordially invited to meet with their favorite Nutcracker characters while enjoying tea, hot chocolate, and treats.</p> | Elementary School |
|  | <p>PAC ProAm presents <i>The Nutcracker</i> 12/19/09 at 1:30PM & 6PM; 12/20/09 at 3PM (120 minutes)</p> <p>Professional and Community performers bring this seasonal classic to life once again with new wonders to behold each year.</p> | Elementary, Middle & High School |
|  | <p>PAC presents Missoula Children's Theatre's <i>King Arthur's Quest</i> 1/29/10 at 9:30AM & 6PM; 1/30/10 at 1PM (60 minutes)</p> <p>Professional actor/directors from MCT lead 50-60 local students in a performance of their very own. Auditions: 1/25/10. See also Missoula Children's Theatre Workshops.</p> | Elementary School |
|  | <p>PAC presents Orchestra Kentucky's <i>Disney in Concert: Magical Music from the Movies</i> 1/31/10 at 6PM (120 minutes)</p> <p>Orchestra Kentucky (formerly The Bowling Green Chamber Orchestra) performs original arrangements of Disney's best music, accompanied by projected stills from the animated classics. See also PAC To Go: Monday with the Maestro.</p> | Elementary School |
|  | <p>Dinner & Show: <i>Church Basement Ladies</i> 4/21/10 at 6PM for Dinner, 7PM for Show Only (120 minutes)</p> <p>Back by Popular Demand! This professional touring production is full of good clean laughs and great music for the entire family, friends and church groups. Join us before the show for a Back Home cooked meal with entertainment provided by Testify. Possible show only 9:30AM performance. Call for details.</p> | |

2009/10 Student & Teacher Activity Guide



What is Kentucky Repertory Theatre?

More familiarly known as Horse Cave Theatre, Kentucky Repertory Theatre (KRT) has produced award-winning professional productions in a rural setting for over 30 years. It serves as Kentucky's only Equity (fully-professional) theatre outside of Louisville. Designated as The State Repertory Theatre of Kentucky and recently received of the Governor's Award in the Arts, KRT was also honored by USA Today as "one of 10 great places to see the lights way off Broadway." KRT brings with it a long history of mounting great theatre classics and the best new works from George Bernard Shaw to Neil Simon and frequently including Shakespeare's plays. KRT also mounts an extensive education program reaching more than 15,000 students annually and a program that encourages new plays by or about Kentuckians.

I thought KRT was in Horse Cave, Kentucky?

It still is! But it is also now at the PAC in Hardin County! While continuing to maintain its home base and performances in Horse Cave, Kentucky Repertory Theatre will begin in September of 2009 to take a winter season of three productions to the Hardin County Schools Performing Arts Center as a part of both company's 2009-2010 seasons.

Do these events correlate to what I teach?

Study Guide Materials will be available on line through www.thepac.net in September 2009 for most KRT Events.

How do I make a reservation and how much do tickets cost?

Group Reservations are required for all KRT events at the PAC and must be made online at www.thepac.net. Tickets for groups of 12 or more for KRT School Day Events are \$4 for Hardin County Schools' students, \$6 for non-Hardin County Schools groups. Regular admission costs apply to Student Groups attending Public Performances.

Can parents come too?

1 adult chaperone is required for every 12 students. 1 adult chaperone attends free of charge per every 12 students. All other parents must pay for admission.

I would love to come but aren't field trips too expensive these days?

KRT's production of *Jack & the Wonder Beans* can be delivered to your school through PAC To Go which is explained later in this document. Please Note: Arts For All funding and PAC Play Dough cannot be used toward admissions to KRT Events but can be used toward transportation costs associated with seeing KRT Events at the PAC.

| 2009/10 KENTUCKY REPERTORY THEATRE (KRT) EVENTS AT THE PAC | | Age Appropriate |
|--|--|----------------------|
| Dracula! | KRT presents <i>Dracula</i> 10/29-31/09 at 7PM 10/30/09 at 9:30AM 10/31/09 & 11/1/09 at 3PM (120 minutes) KRT's very own take on this classic tale of good versus evil is sure to leave you with goose bumps. | Middle & High School |
| Christmas Belles | KRT presents <i>Christmas Belles</i> 12/3-5/09 at 7PM 12/4/09 at 9:30AM 12/5/09 & 12/6/09 at 3PM (120 minutes) This hilarious holiday journey through a misadventure-filled church Christmas pageant is guaranteed to bring joy to your world! | Middle & High School |
| The Miracle Worker | KRT presents <i>The Miracle Worker</i> 2/25-27/10 at 7PM 2/26/10 at 9:30AM 2/27/10 & 2/28/10 at 3PM (120 minutes) The passionate story of Anne Sullivan's struggle to teach the blind and deaf Helen Keller how to communicate. | Middle & High School |



By using the performing arts as a teaching tool in the classroom and by providing books to students through a partnership with Barnes & Noble Booksellers, PAC PAGES exemplifies Performing Arts Guaranteeing Exceptional Students by bringing literature to life for students.

- A quality performing arts **performance** based on a piece of literature,
- Free **books** of that piece of literature for students, and
- **Supplemental funding** for transportation and admission expenses through ARTS For All.

Barnes & Noble Book Fair

During the PAC's fall book fair, the PAC Pages program will receive up to 25% of the amount you spend at Barnes & Noble. These proceeds will go toward purchasing the novel upon which this play is based for every PAC Pages registered student audience member.

Barnes & Noble Teacher Discount

Don't forget to use your 20% teacher's discount to make the most of this great partnership with Barnes & Noble.

Contact the PAC to reserve your books today!

To Kill A Mockingbird

11/6/09 at 7PM (120 minutes)

In celebration of the 50th Anniversary of the Pulitzer Prize-winning novel's publication, Montana Rep's touring production compels and delights audiences.

*This presentation is an **American Masterpiece** project, supported by the Southern Arts Federation and the National Endowment for the Arts, which believes that a great nation deserves great art, and in partnership with the Kentucky Arts Council along with Column6 and with the assistance of Barnes & Noble Booksellers.*



2009/10 Student & Teacher Activity Guide



National Science Education Standards Correlations with Mad Science Productions Shows



| | |
|--|---|
| ▶ Science As Inquiry | |
| Abilities necessary to do scientific inquiry | X |
| Understanding about scientific inquiry | X |
| ▶ Physical Science | |
| Properties of objects and materials | X |
| Position and motion of objects | X |
| ▶ Life Science | |
| Characteristics of organisms | X |
| Life cycles of organisms | X |
| Organisms and environments | X |
| ▶ Earth and Space Science | |
| Properties of earth materials | X |
| Objects in the sky | |
| Changes in earth and sky | |
| ▶ Science and Technology | |
| Ability to distinguish between natural objects and objects | X |
| Ability of technological design | X |
| Understanding about science and technology | X |
| ▶ Science in Personal and Social Perspectives | |
| Personal health | |
| Characteristics and changes in populations | |
| Types of resources | |
| Changes in environments | |
| Science and technology in local challenges | |
| ▶ History and Nature of Science | |
| Science as a human endeavor | X |

 For information contact The Brad Simon Organization (212) 730-2132 www.bsoinc.com
 Mad Science is the world's leader in interactive, educational and family entertainment

CSI007. © 2007 The Mad Science Group. All rights reserved.

Detailed Study Guide Available Upon Request.

2009/10 Student & Teacher Activity Guide



PD & WORKSHOP LIST

MCT Workshops & PDs last approximately 45 minutes and are \$50 a piece. We prefer to do workshops on Tuesday, Wednesday and/or Thursday. Due to our continued dedication to quality educational projects, the maximum number of participants will be strictly enforced. Educators are required to be in attendance and actively involved in all MCT workshops and PDs.

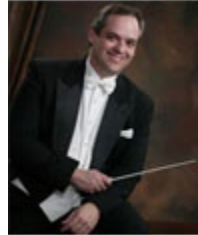
Contact the PAC to schedule your workshop today!

Please Note:

Educators must participate in three MCT PDs in order to fulfill HCS PD Credits

| TITLE | GRADE LEVEL | # OF PARTICIPANTS | DESCRIPTION |
|---|-------------|-------------------|---|
| <i>Drama Quest</i> | K-2 | 30 | This Primary level workshop uses role-playing to help students develop positive self-esteem, increase their communication skills and teach constructive group dynamics. Your students will have so much fun - they won't realize that they're learning! |
| What If? | 3-5 | 60 | This magic question allows elementary students to use their own creativity in a performance environment and encourages structure through imagination. |
| Acting Up | 6-8 | 60 | This informative workshop delves into the basics of the acting craft. Various exercises are used to ease inhibitions while allowing the participants to develop a working strategy for approaching a role. |
| <i>Mime Your Own Business</i> | 9-12 | 30 | Older students are exposed to the advanced art of mime, from realizing their own use of non-verbal communication to exploring actual mime technique and performance. |
| Let's Make-up | K-2 | 60 | Without the support of visual image, the most talented of actors can portray only a narrow spectrum of characters. Make-up is the foundation and the most basic visual image for all performers. This participatory workshop teaches students of all ages by demonstrating corrective, old age and fantasy make-up. |
| <i>Theatre Games</i> | Adults | 60 | This informative workshop is geared toward adult educators, childcare specialists and anyone who works with kids. Incorporating innovative exercises and theatre games, this hands-on, fun-filled workshop is designed as a guide to tap the creativity and spontaneity of children of all ages. Bring a notepad, pencil and imagination. |
| <i>Community Theatre Development</i> | Adults | 60 | Geared to interested adults, this workshop is specifically designed for your community's individual needs and deals with how to begin or improve your community theatre. |

2009/10 Student & Teacher Activity Guide



Monday with the Maestro

On Monday, February 1, 2010

\$50 per one hour visit

Orchestra Kentucky conductor and Music Director, Jeffrey A. Reed will be in Hardin County on 2/1/2010 and is available to visit your school. Here are some things he might be able to do for you:

- Discuss music history with your arts & humanities class,
- Guest conduct a rehearsal,
- Speak to your band boosters, or
- You name it and we'll help you make it happen.

Jeffrey A. Reed, founder, music director and conductor of the Bowling Green (KY) Chamber Orchestra is also the music director and conductor of the Murfreesboro (TN) Symphony Orchestra. Known for his unorthodox method of combining classical and popular music on the same program, Reed has overseen a one-thousand percent increase in subscriptions in Bowling Green, since its inaugural season in 2000.

Reed is also music director of the Sea Islands Symphony, which presents concerts in and around Charleston, South Carolina. Reed made his European conducting debut in 2003 during the White Nights Festival in the city of St. Petersburg, Russia. During the festival, he guest conducted the St. Petersburg State Symphony and the St. Petersburg Orchestra of Popular Classical Music. In 2006, he guest conducted the Charleston Symphony Orchestra in the grand finale of the City of Charleston's Piccolo Spoleto Festival, which drew a crowd of over 10,000. In May 2007, Reed had the honor of being the first American to conduct the Busan Sinfonietta of Busan, South Korea. In August 2007, he appeared with the Owensboro Symphony Orchestra and has twice conducted the University of Mobile (AL) Symphony Orchestra. He is a 2008 recipient of the Jefferson Award for outstanding public service.

Reed's performances have been well-received. His concert with the Charleston Symphony was called "the very best Piccolo Spoleto Finale in the history of the festival." In his book, *Small is the New Big*, bestselling author and marketing guru Seth Godin called Reed's programming "clever" and praised him for the "totally different way" he approaches orchestral programming.

Born in Goshen, Indiana, Reed holds a master's degree in conducting from the University of Iowa, where he studied with James Dixon and Myron Welch. He is also a graduate of the University of Louisville, where he studied trumpet with Leon Rapier and conducting with James Livingston, both of the Louisville Orchestra. Post-graduate conducting teachers include Kenneth Schermerhorn (Nashville Symphony) and Leonid Korchmar (St. Petersburg Conservatory, Russia). He has also completed graduate work in philosophy and religion and holds a Juris Doctorate. He, his wife, Dr. Sherryl B. Reed, and two children, Mary Grace and Harrison, make their home in Bowling Green, Kentucky.

Request a reservation by going to PAC To Go on www.thepac.net. You will then be contacted to coordinate dates and times for your performance(s). Once you receive your date and time, please clear your calendar so that you can serve as "host" during the Maestro's visit to your school that day.

Contact the PAC to schedule your visit with the Maestro today!

Last Updated: 8/11/2009

2009/10 Student & Teacher Activity Guide



"The PAC To Go experience was top quality! Thank you!"

- E. G. Thompson, Lakewood Elementary School Principal

"I loved PAC To Go!! Educational ... Quality Performance ... and we didn't have to load the kiddos on a bus or do all the paperwork necessary to take a field trip! Great Performance!!"

- Laureen Laumeyer, Meadow View Elementary

"I can't tell you how much I enjoyed PAC To Go. My first graders were completely attentive during the entire performance even while sitting on our cafeteria floor. Thank you for getting the program to our school."

- Jan Mackey, Rineyville Elementary

"The faculty and students would like to thank you for allowing St. James School the opportunity to host PAC To Go. The staff commented on how much the students enjoyed the performance. We are truly appreciative that the PAC considered St. James for one of the performances."

- Ellen Hamilton Asst. Principal St. James School

PAC To Go brings the performing arts right to YOU and your students with no transportation costs and only limited time out of the classroom.

This season's PAC To Go show is Kentucky Repertory Theatre's *Jack and the Wonder Beans* and will be available to tour to your school March 8-19, 2010.

Your Math:

- The cost for PAC To Go is \$600 per performance.
- Apply for **ARTS For All** funding and cut that expense in half. That's \$300 per performance for as many students as you can fit in your gym or cafeteria.
- In many cases, that will add up to less than a \$1 per student.

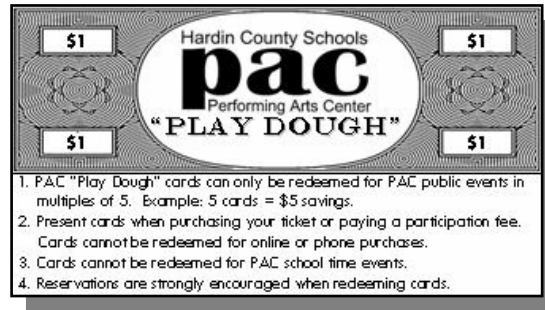
Your Homework:

- How many students will be attending?
- Will they all fit into your gym or cafeteria at the same time or will you have to book two performances?
- Is the space available for your performance(s)? It will be needed for two hours prior to the performance for set up and up to one hour afterwards for clean up.
- Do you have the approval of your school's gym teacher or cafeteria manager for the use of their space?
- How will you pay for the show? Remember that ARTS For All is available to pay up to half the cost.
- Do you have the approval of your school's principal?

If you have all the answers then make your reservation request by going to PAC To Go on www.thepac.net. You will then be contacted to coordinate dates and times for your performance(s). Once you receive your date and time, please clear your calendar so that you can serve as "host" during our actors' visit to your school that day.

Contact the PAC to schedule your visit from KRT today!

2009/10 Student & Teacher Activity Guide



\$1 **PAC Play Dough** coupons are redeemable in multiples of 5 toward admission to PAC Presentations and participation fees. Cards are awarded to students either attending or participating in events at the PAC.

Teachers are welcome to keep PAC Play Dough instead of distributing them to students so that they can be used toward the admission cost of future Group Reservations.

Please Note:

PAC Play Dough *can* be used toward admission costs related to any "PAC Presents" or "PAC ProAm" Event. These Events are listed on page 3 of this document.

PAC Play Dough *cannot* be used toward transportation costs associated with seeing events at the PAC.

PAC Play Dough *cannot* be used toward admissions to rental events held at the PAC by organizations such as:

- Kentucky Repertory Theatre,
- Allegro Dance Theatre,
- Guitar Master Series, or
- Youth Theatre of Hardin County.